

*Grand Ledge*  
**Public Schools**

*Growing Learners, Preparing Students*

# Proposal 1 - Smarter, Stronger, Safer



Create **SMARTER** Schools

- Start district's grade restructuring initiative
- Build additional classrooms
- Improve technology for students & staff



Create **STRONGER** Schools

- Upgrade critical needs
- Increase operational efficiencies
- Replace roofs as needed



Create **SAFER** Schools

- Provide secure entrances at all schools
- Improve traffic flow
- Replace aging bus fleet as needed

# Proposal 1 - District Restructuring



## ***Proposal 2 - Community, Athletics, & Fine Arts***

Proposal Two would provide \$29,485,000 for athletic and fine arts building and grounds improvements designed for district and community use:

- Constructing a new pool and support spaces
- Improving fine arts spaces at GLHS by adding a main lobby and support spaces
- Remodeling the old pool for alternative community and athletic uses
- Improving athletic fields and support spaces

# Both Bond Proposals Pass Nov. 6, 2018

What were the Election Results for Proposal 1 - School Improvements?

9,284 YES votes 59%

6,454 NO votes

**PASSED**

What were Election Results for Proposal 2 - Community, Athletics, & Fine Arts?

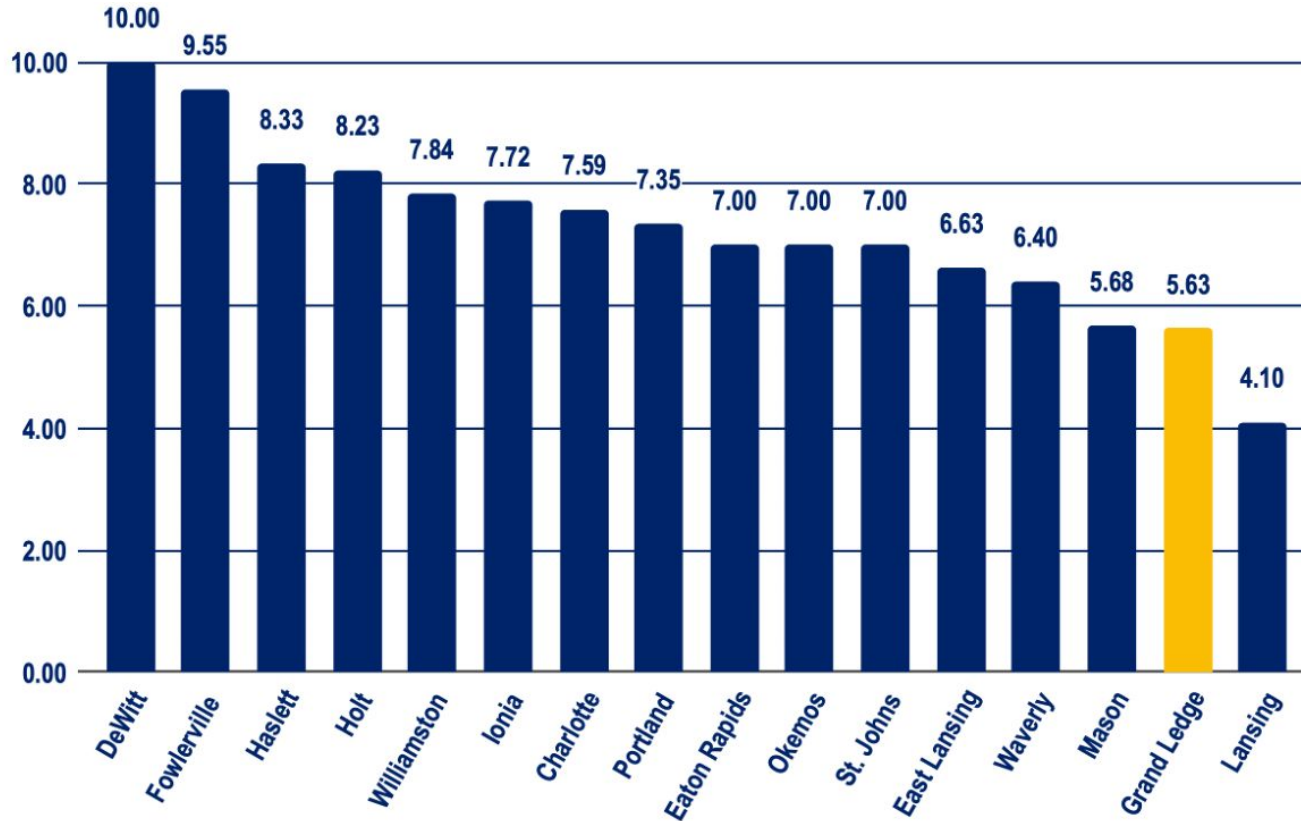
8,345 YES votes 53%

7,364 NO votes

**PASSED**

# *Why were bond improvements planned to be completed in three phases?*

- Keeps millage rate low
- Maximizes planning time
- Provides adequate time for construction
- Adds technology in all three phases
- Adds buses & transportation improvements in all three phases



**2<sup>nd</sup> Lowest  
Millage Rate  
in C.A.A.C.**

Source: rates retrieved in July 11, 2023,  
from Michigan's Department of Treasury  
<https://equal.bsasoftware.com/MillageSearch.aspx>

# Bond Improvements

## Phase 1



## Major Projects for Phase 1

- ✓ Transition to Holbrook Elementary for Grades K-4
- ✓ Transition to Beagle Middle School for Grades 7-8
- ✓ Build New Competition Pool
- ✓ Add M-43 Connection



# District Restructuring in 2020-2021



## ***Proposal 2 - Community, Athletics, & Fine Arts***

Proposal Two would provide \$29,485,000 for athletic and fine arts building and grounds improvements designed for district and community use:

- ✓ New Track & Field facility (because of M-43 Connection)



HOLBROOK ELEMENTARY SCHOOL

HOLBROOK ELEMENTARY

GRAND LEDGE PUBLIC SCHOOLS

615 JONES STREET

***New Secure Entrance  
& New Traffic Flow***



***6 New Classrooms on 1<sup>st</sup> Floor***  
***9 New Classrooms on 2<sup>nd</sup> Floor***



***New Multipurpose Gym,  
New Playground, & New Bus Loop***



***New Secure Entrance, New Traffic Flow,  
Expanded Cafeteria & Serving Areas***



***14 New Academic Classrooms***

The image shows a modern, single-story brick building with a large glass entrance on the right. A prominent yellow pillar stands in the foreground. The building has several large windows along its side. The sky is blue with scattered white clouds. The ground is a light-colored concrete plaza. In the background, there are green trees and a few parked cars. The overall scene is bright and clear.

## ***2 New Music Classrooms***





***New Competition Gym***



AQUATIC CENTER  
GRAND LEDGE PUBLIC SCHOOLS

# ***New Competition Pool***



POOL SPECTATOR  
AREA (Upstairs) →  
COMPETITION POOL ←  
CAFETERIA  
GYMNASIUMS  
ELEVATOR  
RESTROOMS

***Competition Pool Entrance***



**Spectator Level**



**Deck Level**

An aerial photograph of a school campus. The image shows several buildings, parking lots, and sports fields. In the foreground, there is a large, oval-shaped track and field facility with a green field in the center and a dark track around it. The field has "ARABO LEON" and "SPORTS CENTER" written on it. To the left of the track, there is a large, circular area with a red and white design. In the background, there are several buildings, including a large one with a white roof, and several parking lots. There are also several baseball fields and soccer fields. The campus is surrounded by trees and a road.

***Additional Parking***

***New Track &  
Field Facility***

***M-43 Connection to Secondary Campus***

# 8-Lane Track & Multipurpose Turf Field



# 8-Lane Track & Multipurpose Turf Field







***Ticket Booths, Concessions, & Restrooms***



MIDDLE SCHOOL  
TRACK + FIELD  
Girls Records

HIGH SCHOOL  
TRACK + FIELD  
Boys Records

# *Record Boards*

# Bond Improvements

## Phase 2

2



## Major Projects for Phase 2

- ✓ Fine Arts & Athletic Addition at GLHS
- ✓ Remodel Old Pool for Community Use
- ✓ Improvements at Delta Center Elementary
- ✓ Build a New Wacousta Elementary

## *Keep in mind: 2022 was NOT 2018*

Phase 2 timelines and projects had to be adjusted because of the realities of 2022 and the post-pandemic world. And those realities continue... more on this later...

**Post-Pandemic ≠ Pre-Pandemic**

# *Main Level Entrance (conceptual rendering)*



# *Main Level Entrance*



# Main Level Entrance



# Main Level Entrance

ATHLETICS

WEIGHT ROOM





# *New Weight Room*



# *New Weight Room*



# *New Weight Room*



A photograph of the Grand Ledge High School Auditorium & Fine Arts building. The building is a modern, two-story structure with a light-colored stone or brick facade. The entrance is a large, glass-fronted structure with a dark grey frame. The text "GRAND LEDGE HIGH SCHOOL" and "AUDITORIUM & FINE ARTS" is embossed on the stone wall above the entrance. The sky is blue with scattered white clouds. In the foreground, there is a paved area with a crosswalk and a signpost with a "STATE LANE" sign and a pedestrian crossing sign. A few bare trees are visible in the background.

GRAND LEDGE HIGH SCHOOL  
AUDITORIUM & FINE ARTS

***Lower Level Entrance***

GRAND LEDGE FINE ARTS

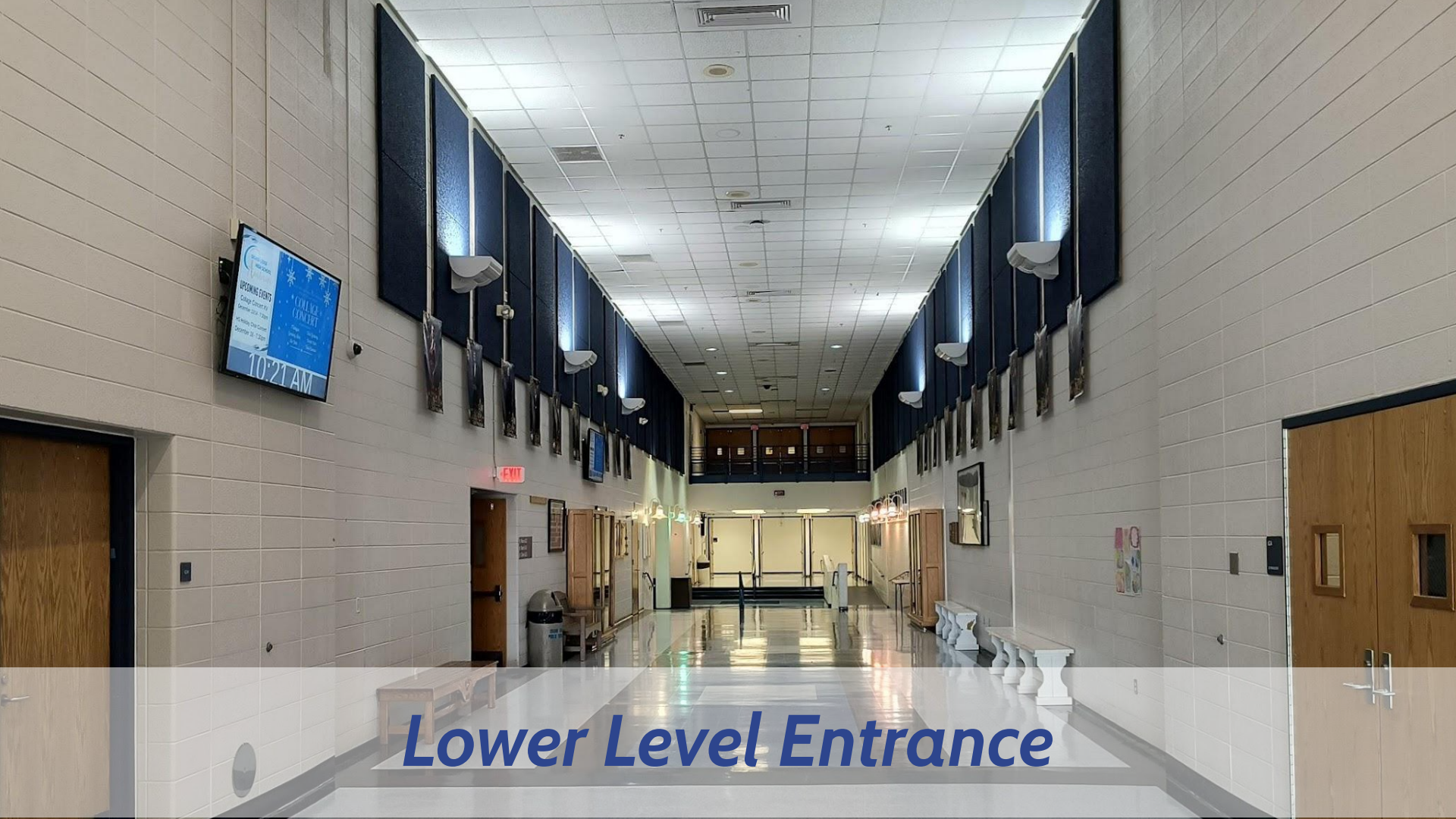
*Lower Level Entrance (conceptual rendering)*



# GRAND LEDGE FINE ARTS

AUDITORIUM

*Lower Level Entrance*



# *Lower Level Entrance*



***Lower Level Lobby (conceptual rendering)***





*Lower Level Lobby*



# *Lower Level Lobby*



APPELDATE Heating • Cooling • Electrical  
Insulation • 24 Hour Service  
We're all about Comfort with Efficiency

HOME	PERIOD	VISITOR
BONUS	PLAYER FOULS	FOULS
FOULS		

PJB TOWLING  
857.888.0000

Little Caesars

Nick Cypher Agency Inc.  
FARM BUREAU INSURANCE

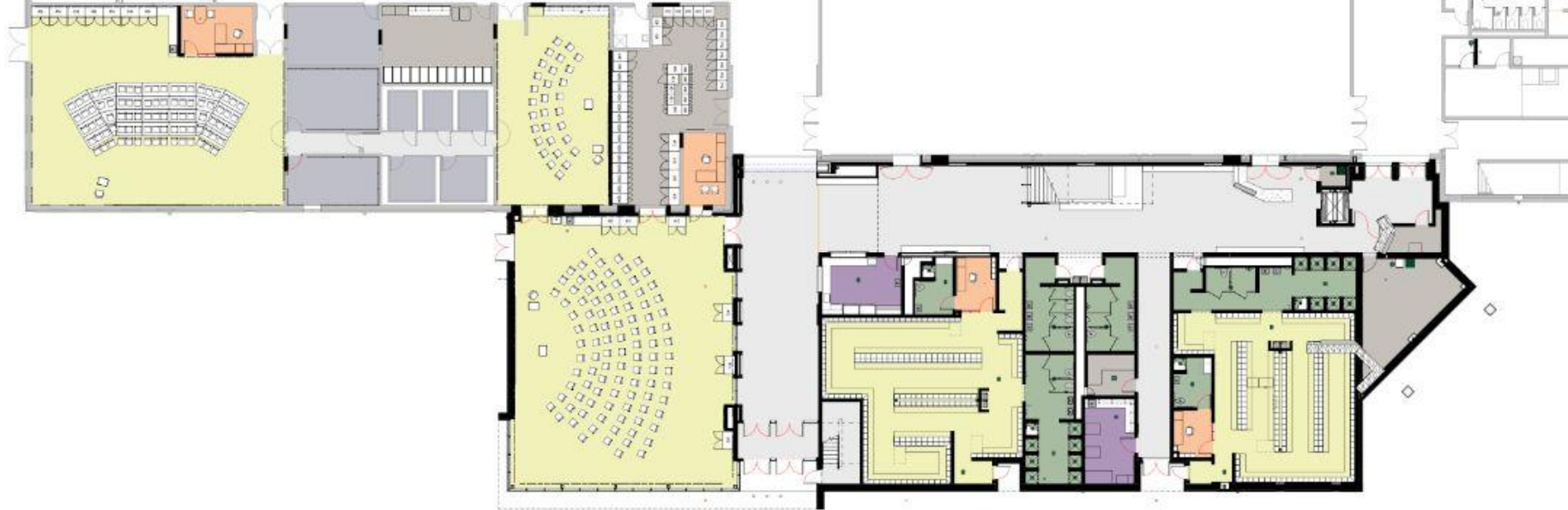
**GRAND**

BOYS	YEAR	TRA
JAMES JACKSON	2006	10.4
HAROLD OLDS (SA); JAMES JACKSON (OB)	2012	48.86
HARRIS EDWARDS	2008	1.53
JOHN DYER	2017	4.1
CHRISTIAN HUBAKER	2000	9.10
ANDY MARSH	2003	14
PAUL KELLY	2004	41.64
BARRIEN HAYDEN	2014	41.64
BLAMO, A. EDWARDS	2015	129.16
JONES, J. REVERMAN	2015	129.16
EDLIN, S. JONES	2007	3.21
SHELTON, A. EDWARDS	2007	3.21
D. LINDER, JACKSON	2001	7.47
THOMPSON, FEDEWA, EMERMAN, B. ROBINSON	2014	
AUSTIN EDWARDS	1997	
JEFF KUS	2004	
BENNY LOPEZ	2011	
JAKE BENNETT	1995	
DOUG KREPPET	1997	
COREY KELLICUT	1997	

*Inside Competition Gym Viewing Addition*

# Lower Level

- New Band Room (choir moves to bigger, old band room)
- Fine Arts Storage Improvements
- Auditorium Improvements - Stage Lighting & Digital Sound
- New Locker Rooms & Training Room (with exterior doors)





# *Community Pool at GLHS*



# *Community Pool at GLHS*



# Community Pool Upgrades



# *Community Pool Upgrades*



# Delta Center's New Secure Entrance

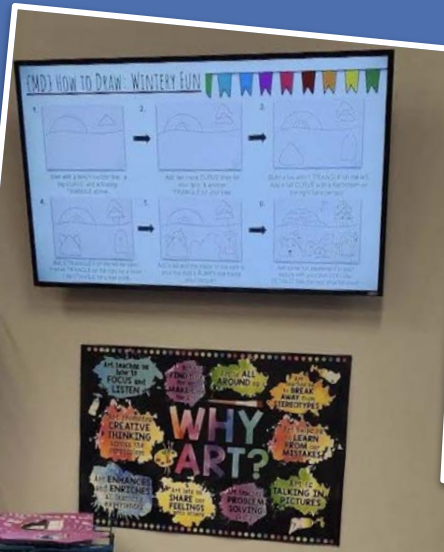




***New Office***



*New Music Classroom*



**New Art Classroom**



***BEFORE » Only hall from 3<sup>rd</sup> & 4<sup>th</sup> grade wing***



***AFTER » Another hall improves transitions.***

# *Connection to Michigan Ave.*



# Connection to Michigan Ave. (panoramic)



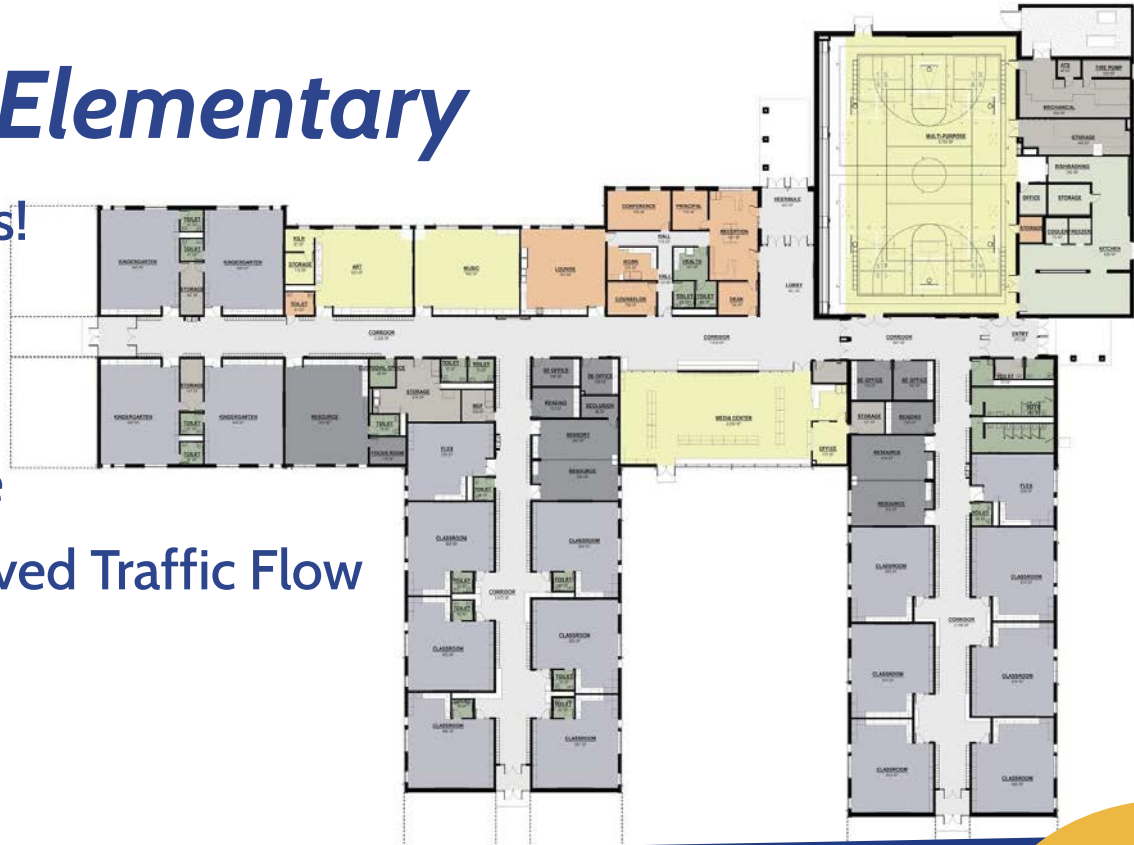




***Portable Classrooms Removed***

# NEW Wacousta Elementary

- Dream Depot 2.0 stays!
- NEW Secure Entrance
- NEW Classrooms
- NEW Second Entrance on Herbison for Improved Traffic Flow





**August 3, 2023 - Wacousta Groundbreaking**



*November 2023*

**NEW  
Entrance**

**Current  
Entrance**

**Herbison Road**

**Wacousta Road**

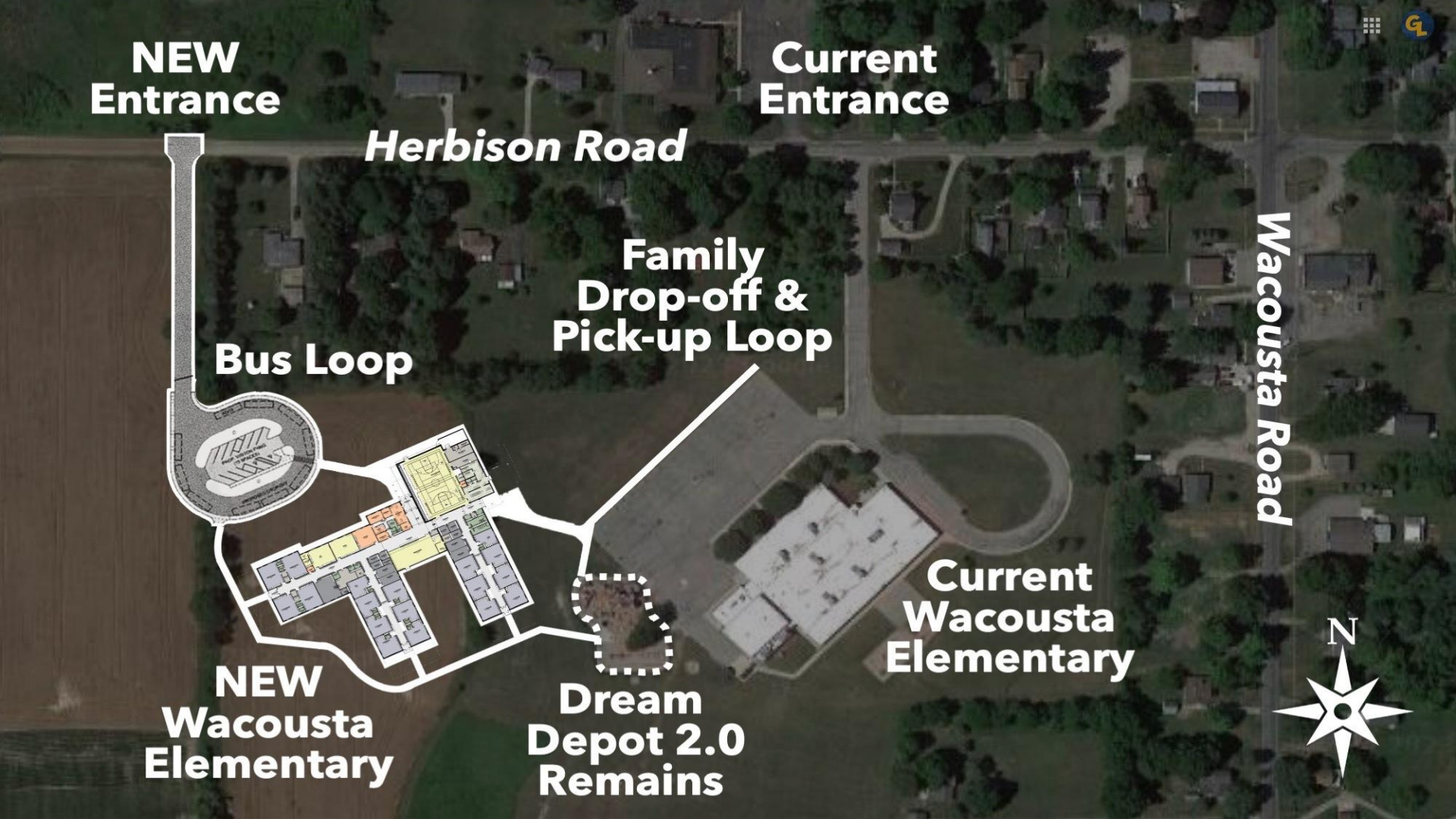
**Bus Loop**

**Family  
Drop-off &  
Pick-up Loop**

**NEW  
Wacousta  
Elementary**

**Dream  
Depot 2.0  
Remains**

**Current  
Wacousta  
Elementary**





***November 2023***



***Main Entrance (conceptual rendering)***



***Main Entrance (Nov. 2023)***





***Main Office (conceptual rendering)***



***Main Office (Oct. 2023)***



*Library (conceptual rendering)*



*Library (Nov. 2023)*



***Multipurpose Gym (conceptual rendering)***



***Multipurpose Gym (Nov. 2023)***

## 2022 was NOT 2018 – Construction Woes

“Two years after the coronavirus pandemic struck, the U.S. construction industry is still experiencing multiple impacts. Unprecedented increases in materials costs, supply-chain disruptions, and an increasingly tight labor market have made life difficult for contractors and owners alike.”

~ Associated General Contractors Construction Inflation Alert, Feb. 2022

# Post-Pandemic ≠ Pre-Pandemic

# ***Increased Costs: Nonresidential Construction***

Producer Price Index (PPI) for Nonresidential Construction, measuring the change over time in the prices domestic producers receive for their output.

THEN: 117.000 PPI in November 2018

NOW: 161.163 PPI in October 2023

→ 38% increase in Nonresidential Construction PPI

*PEAK: 168.361 PPI in June 2022 (44% increase at peak)*

Source: <https://fred.stlouisfed.org/series/WPUIP2312001>



## ***Increased Costs: Iron & Steel***

Producer Price Index (PPI) for Iron & Steel, measuring the change over time in the prices domestic producers receive for their output.

THEN: 246.700 PPI in November 2018

NOW: 316.391 PPI in October 2023

→ 28% increase in Iron & Steel PPI

*PEAK: 433.525 PPI in November 2021 (76% increase at peak)*

Source: <https://fred.stlouisfed.org/series/WPU101>

# *Supply Chain Delays & Long Lead Times*

Some examples from our recent projects:

65 weeks for Switchgear at Wacousta

35 weeks for Air Handler Units at Wacousta

These complications cause challenges when work needs to be done in summer.

**Post-Pandemic ≠ Pre-Pandemic**

## *Right Now is NOT 2018 – Plans Change!*

Bond projects & budgets were created in the 2018 reality...  
and that reality no longer exists post-pandemic ...  
plans have been updated to reflect priorities.

**Post-Pandemic ≠ Pre-Pandemic**

## Prioritized List and Budget Impact

### PRIORITY PROJECTS

1. New Wacousta
2. Districtwide HVAC
3. Safety & Security Upgrades
4. GLHS, Hayes, & Neff Roofs
5. Hayes & WR Road/Parking Lots
6. Technology Infrastructure
7. WR Classrooms
8. Delta Center Gym
9. ~~12 New Buses~~

### IF DOLLARS ALLOW

1. WR Gym
2. HS Science Lab Remodel

### MAY REQUIRE ADDITIONAL FUNDING

1. Dave and Betty Morris

*This prioritized list was approved unanimously at the November 14, 2022, Board of Education meeting.*

# Bond Improvements

Phase 3

3



## Major Projects for Phase 3

- Improvements to Neff Early Childhood Center
- Improvements to Grand Ledge High School
- Improvements to Hayes Intermediate
- Improvements to Willow Ridge Elementary
- Operations HVAC

# **COMMUNITY CONNECTION**

*Community Members  
Can Subscribe to Get  
Emails, Text Messages,  
&/or Phone Calls from  
the School District.*

**GLcomets.net/Connect**





**#PROUDTOBEACOMET**